



**ALASKA DIVISION OF HOMELAND SECURITY &  
EMERGENCY MANAGEMENT**



**SITUATION REPORT 21-305 • NOVEMBER 01, 2021**

Toll-Free 1.800.478.2337

Anchorage Area 907.428.7000

SEOC 907.428.7100

<p><b><u>SEOC Preparedness Level</u></b> Level 1 – Normal Operations</p>	<p><a href="http://ready.alaska.gov">http://ready.alaska.gov</a></p>	<p><b><u>National Terrorism Advisory System:</u></b> <a href="#">Read the NTAS Bulletin here</a></p>
<p><b><u>Maritime Security (MARSEC)</u></b> Level: 1-Minimum Appropriate Security Measures</p>	<p><b>WHO Novel Coronavirus Pandemic (COVID-19):</b>  <a href="#">2019 Novel Coronavirus</a></p>	<p><b><u>Alaska Military Installation Force Protection Level:</u></b> FPCON Bravo</p>

(Significant changes from previous situation reports are in red.)

**Significant Issues:**

**Southcentral storm:**

This weekend, an “atmospheric river” storm system brought heavy rain, heavy snow, and strong winds to much of Southcentral Alaska. SEOC was in regular, active communication with multiple communities during the weekend. Several landslides were reported along the Seward and Sterling Highways in the Kenai Peninsula Borough. The Sterling Highway remains closed at Cooper Landing due to a landslide. Minor flooding, causing road damage and washouts, was reported in the Girdwood area in the Municipality of Anchorage. Widespread power outages were reported in the Matanuska Susitna Borough. SEOC has received no requests for State assistance at this time. SEOC will remain in contact with communities as detailed damage assessments are conducted by communities.

**Threat Level Changes:**

None

**State of Alaska Department of Health and Social Services (DHSS)**

DHSS is now leading the State of Alaska COVID-19 Recovery through Department Operations, supported by SEOC and other state departments as required.

For current COVID-19 information, see:

<https://covid19.alaska.gov/>

<https://www.cdc.gov/coronavirus/2019-ncov/index.html>

**NTAS BULLETIN**

To read current advisories, click the link below:

<https://www.dhs.gov/national-terrorism-advisory-system>

**Travel Alerts and Conditions**

For current driving conditions dial 511 or link to <http://511.alaska.gov/>

## Barry Arm Landslide / Tsunami Risk

For the latest information on the Barry Arm Landslide and Tsunami risk, click here:  
[DGGG Barry Arm Landslide and Tsunami Hazard](#)

## Recent Earthquakes

USGS Earthquake Information: <http://earthquake.usgs.gov/>

National Tsunami Warning Center: <http://tsunami.gov/>

## Alaska Volcanoes

**Great Sitkin** Alert Level: **Watch** and Aviation Color Code: **Orange**

**Pavlof** Alert Level: **Watch** and Aviation Color Code: **Orange**

**Semisopchnoi** Alert Level: **Watch** and Aviation Color Code: **Orange**

For Alaska Volcano updates, go to: <https://www.avo.alaska.edu/>

## Air Quality Index (AQI) Advisories

For the most up to date Air Quality Index Advisories:

<http://dec.alaska.gov/Applications/Air/airtoolsweb/Home/Index>

## Spills of Oil and Hazardous Substances

The ADEC Spill Prevention and Response page is located at:

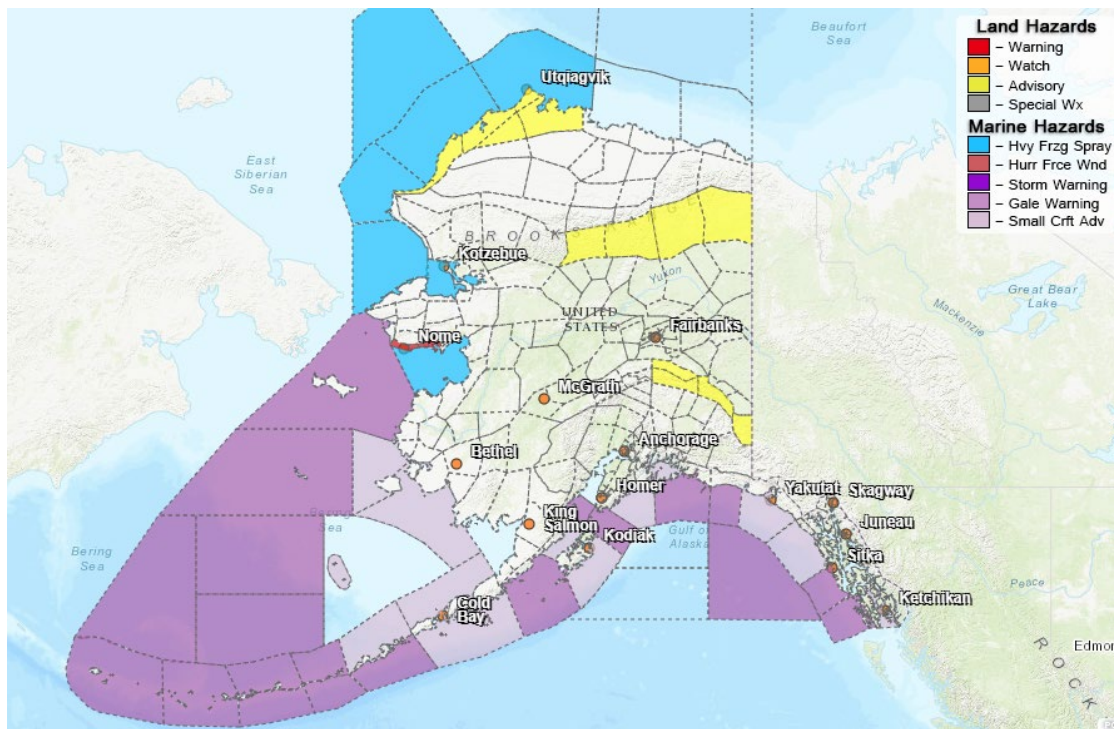
<http://dec.alaska.gov/spar/ppr/spill-information/response/>

## Alaska Cyber Security Information

State Employees may sign up for cyber security notifications and alerts at

<https://oit.alaska.gov/security>

## Significant Weather:



A Flood Warning remains in effect for streams in the Girdwood area until 10:45 AM this morning. Small streams and creeks in residential areas will continue to see minor flooding.

A Winter Weather Advisory remains in effect until 6 PM this evening for the southeastern Brooks Range. Additional snow accumulation of 4 to 5 inches is expected.

A Winter Weather Advisory is in effect from 1 PM today to 7 PM Tuesday for the eastern Alaska Range. Total snow accumulations of 5 to 10 inches are expected.

High Surf Advisories are in effect today for the Chukchi Sea Coast from Cape Lisburne to Point Barrow, including Utqiagvik. Beach erosion is expected. Minor flooding of low-lying areas near the beach is possible.

A Winter Storm Warning is in effect from 4 PM this afternoon to 4 PM Tuesday for the Southern Seward Peninsula Coast. Heavy snow and blowing snow are expected. Travel will be very difficult. Total snow accumulations of 6 to 9 inches are expected.

For more information and the most current weather, Watches / Warnings / Advisories go to: <http://www.weather.gov/arh>

**The Next Situation Report:** will be 02 November 2021. A significant change in the situation or the threat level will prompt an interim report.

This report is posted on the internet at <https://ready.alaska.gov/sitrep>. To register for email distribution, go to <http://list.state.ak.us/mailman/listinfo/dhsem.situation.report>. Direct questions regarding this report to the SEOC at 907-428-7100 or [seoc@alaska.gov](mailto:seoc@alaska.gov)